

Selection of sewage pumping station PSAW H+E

typo	PSAW - H	A1	B2	C1	D1	E1	X	X
A1	vessel diameter (m)	x						
B1	vessel height (m)		x					
C1	number of pumps			x				
D1	cover NO - 0 YES - 1				x			
E1	stainless still pipeline NO - 0 YES - 1					x		
X							x	
X								x

model	PSAW - E	A2	B2	C2	D2	E2	F2	G2
A2	power (kW)	x						
B2	flow (l/s)		x					
C2	designed height (m)			x				
D2	pump operating regimes 1+0 - 1 1+1 - 2 2+0 - 3 2+1 - 4 3+0 - 5				x			
E2	continuous level measurement NO - 0 YES - 1					x		
F2	SMS/GPRS fault signalisation, GSM/GPRS modem NO - 0 YES - 1						x	
G2	remote control and monitoring system NO - 0 YES - 1							x

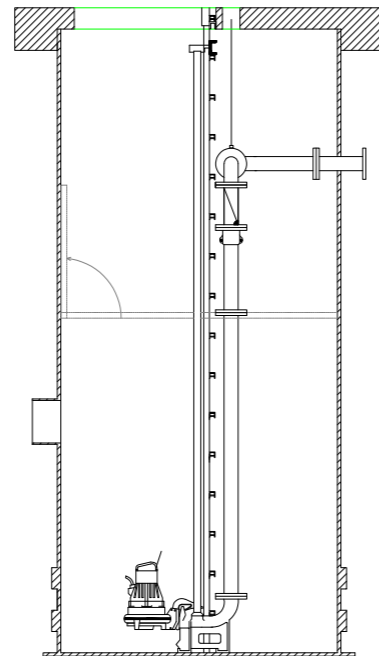
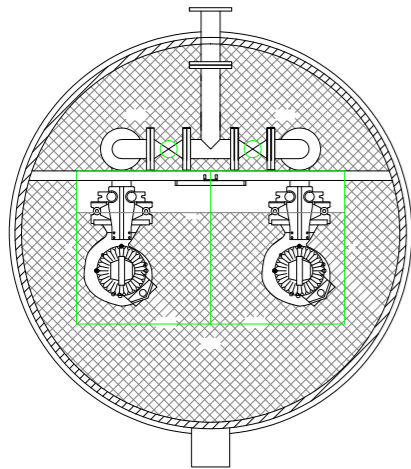
Selection of over-pumping station – example

type: PSAW - H - 1.6 - 3.6 - 2 - 0 - 1 - X - X

model: PSAW - E - 4.0 - 8.0 - 11.5 - 2 - 0 - 1 - 0

In case of more complex buildings requiring three or more generating sets, recessing by frequency governors, generating set operation that depends on water in-flow or level, special higher capacity retentions, gate valve chambers, do not hesitate to contact our experts.

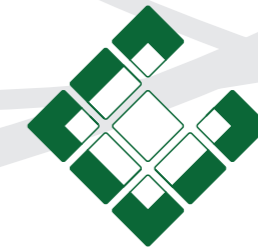
Note: Certificate on conformity for newly constructed equipment No. 09-DD-3383, EUROSTANDARD



Important:
Prior to ordering of any equipment, all pumping station parameters and geometry shall be precisely defined, electric and mechanical issues and all possible ambiguities shall be resolved preliminary, to avoid any problems during pumping station erection and operation.

HOBAS Rohre GmbH
Kralja Zvonimira 122 - HR - 10000 Zagreb
tel: +385 1 61 83 691 - fax: +385 1 61 83 693
e-mail: hobas@zg.t-com.hr
www.hobas.com

ENA d.o.o.
Jurja Haulika 20 A - HR - 47000 Karlovac
tel/fax: +385 47 612 057, 612 062
e-mail: ena@ka.t-com.hr
www.ena.hr



ENA
KARLOVAC



SEWAGE PUMPING STATION TYPE PSAW H+E

PSAW H+E

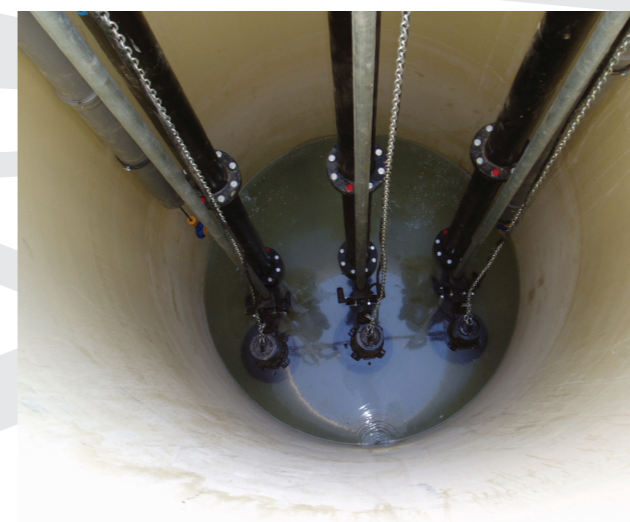
PSAW H+E sewage pumping station is a type finished product, intended for drainage of precipitation and faecal discharges, with the capacity from 5 to 250 l/s per unit, with fully automatic operation.

The basic part of PSAW sewage pumping station is its housing, made of centrifugal polyester in accordance with OENORM B 5161, including preassembled connections for inlet and outlet pipelines, fitted with a ladder for servicing and consoles for assembly of electric and mechanical equipment.

At request, PSAW can be delivered with additional reinforcement for anchoring (in the concrete) against lift-up forces caused by underground waters.



Thanks to the simple selection of a type, complete workshop preassembly and adjusted connections, we are offering you really fast delivery and installation, including simultaneously design and construction savings.



Control cabinet comprises built-in self-consumption equipment (lightening installations, service sockets and similar). Voltage, current and unit operating hours are generally measured, while the connection for outside stand-by power supply (diesel generating set) is installed at request. Overvoltage protection is performed by a differential current protection switch with two circuits (one for pumping station and the other for installations).

Terminal for outside grounding installation is also foreseen



Completely water tight housing dimensions depend on the equipment to be installed into the sewage pumping station and on the required retention volume.

PSAW sewage pumping station can be fitted with one, two or three immersed pumping generating units (of special construction) having a corresponding capacity (Q/H) and capable of operation under various operation regimes.

For larger capacities PSAW, few sewage pumping stations can be connected together.

A special vent for pressure pipeline discharge can be installed at request.

Electric equipment is generally installed in a polyester self-standing cabinet, with IP 55 protection level, including the foundation and the roof, fitted with anti-condensing heater, fans (depending on the construction of generating set recessing), lightening and pumping station control equipment, manual and automatic controls.

During manual operation suction pumps are controlled optionally with switched on necessary protections, and in fully automatic regime operation is based on the preset levels.

The main valves can be operated and the pumps can be replaced without entering into pumping station, standing on top cover.



Pressure pipelines are defined by the capacity of installed suction pumps and they are interconnected into one collecting pipeline coming out of the vessel and connecting to the outside pressure pipeline.

Vertical pipelines are fitted with check valves and gate valves, vent and safety (optionally) air valves, with belonging gate valves, on the horizontal pipelines

PSAW is foreseen for manual – service and fully automatic operating regime without crew. During automatic operation, control is performed by the installed PLC, supported by populated software and instrument equipment for discrete or continuous level measuring.



Suction pumps operate changing cyclical turns, while in case of a failure of one of the pumps, the other starts the operation automatically.

GSM/GPRS communication is also envisaged (the investor shall provide for a terminal, DATA and mobile cell numbers for SMS service) while all the other equipment and software is included. Communication of selected statuses (alarm, failure and similar) shall go in one direction to the selected mobile cell number (stand-by service).

We offer the option of remote control and monitoring equipment installation, as well as installation of the equipment enabling integration of the pumping station into the existing remote control and monitoring systems.